



**JOINT WMO/IOC TECHNICAL
COMMISSION FOR OCEANOGRAPHY
AND MARINE METEOROLOGY**

Savi Narayanan

OOPC

COOP

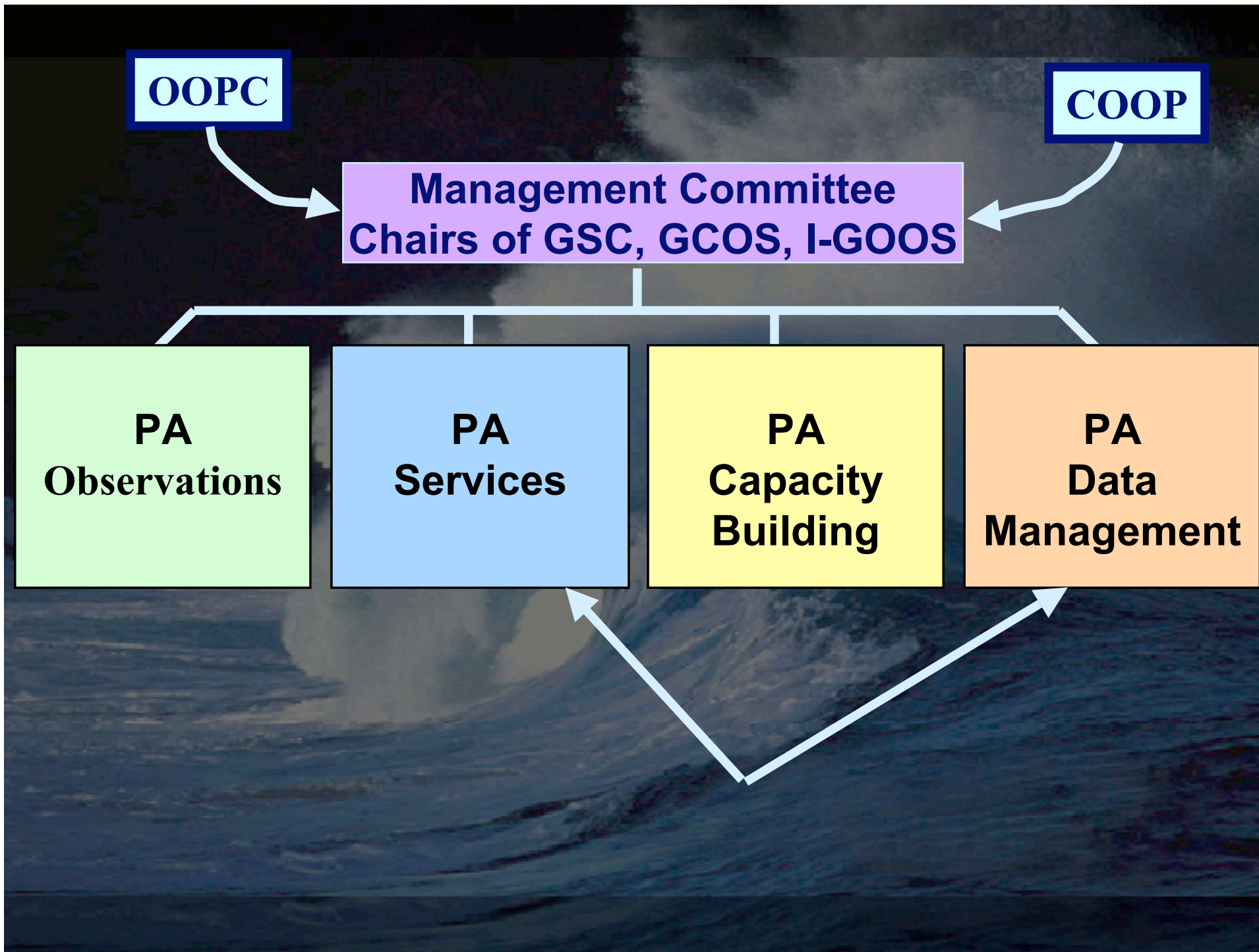
Management Committee
Chairs of GSC, GCOS, I-GOOS

PA
Observations

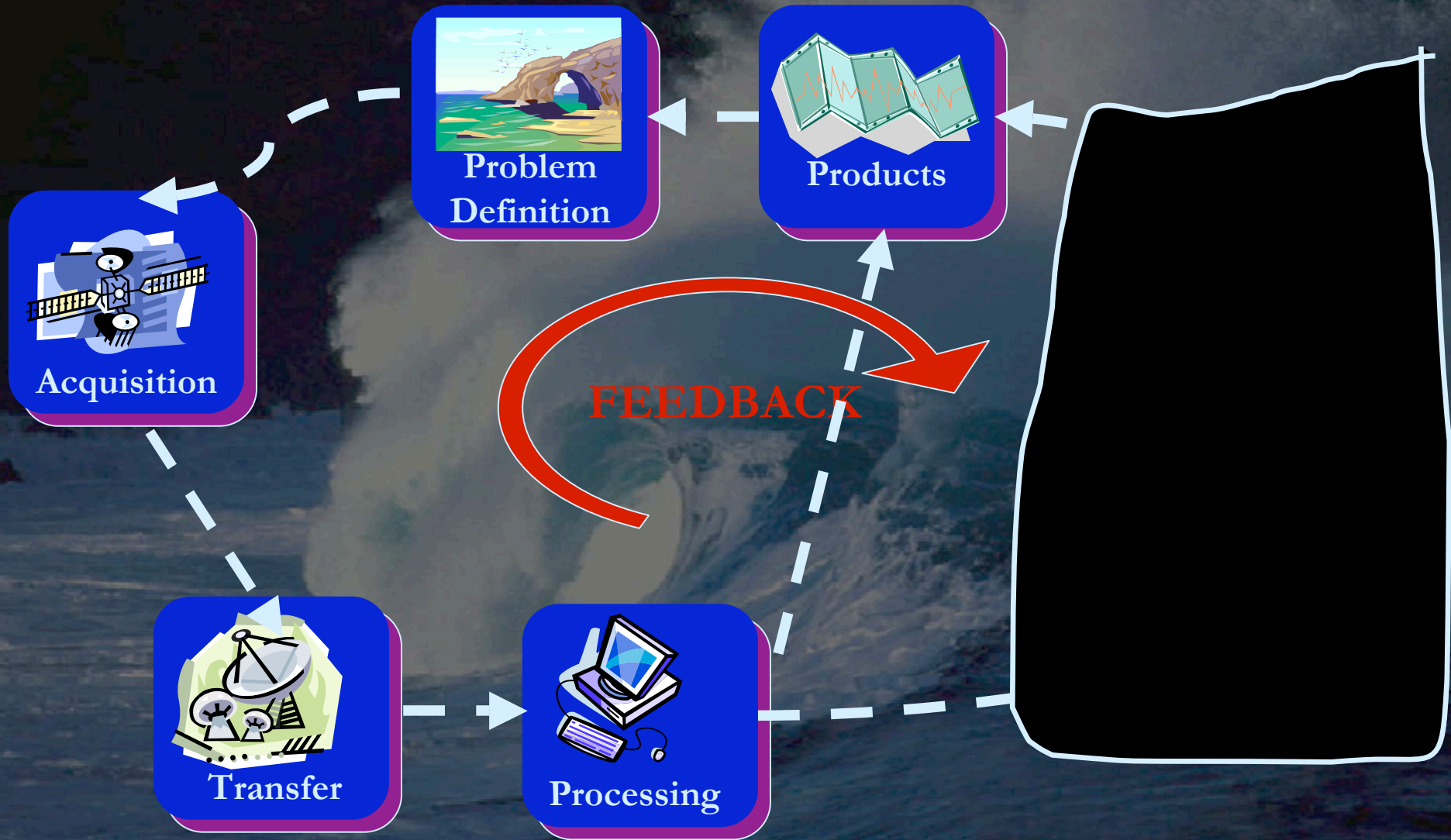
PA
Services

PA
Capacity
Building

PA
Data
Management



End-to-End Data Mgt



So what?

Data stored here,
there, and everywhere



Road to the Future

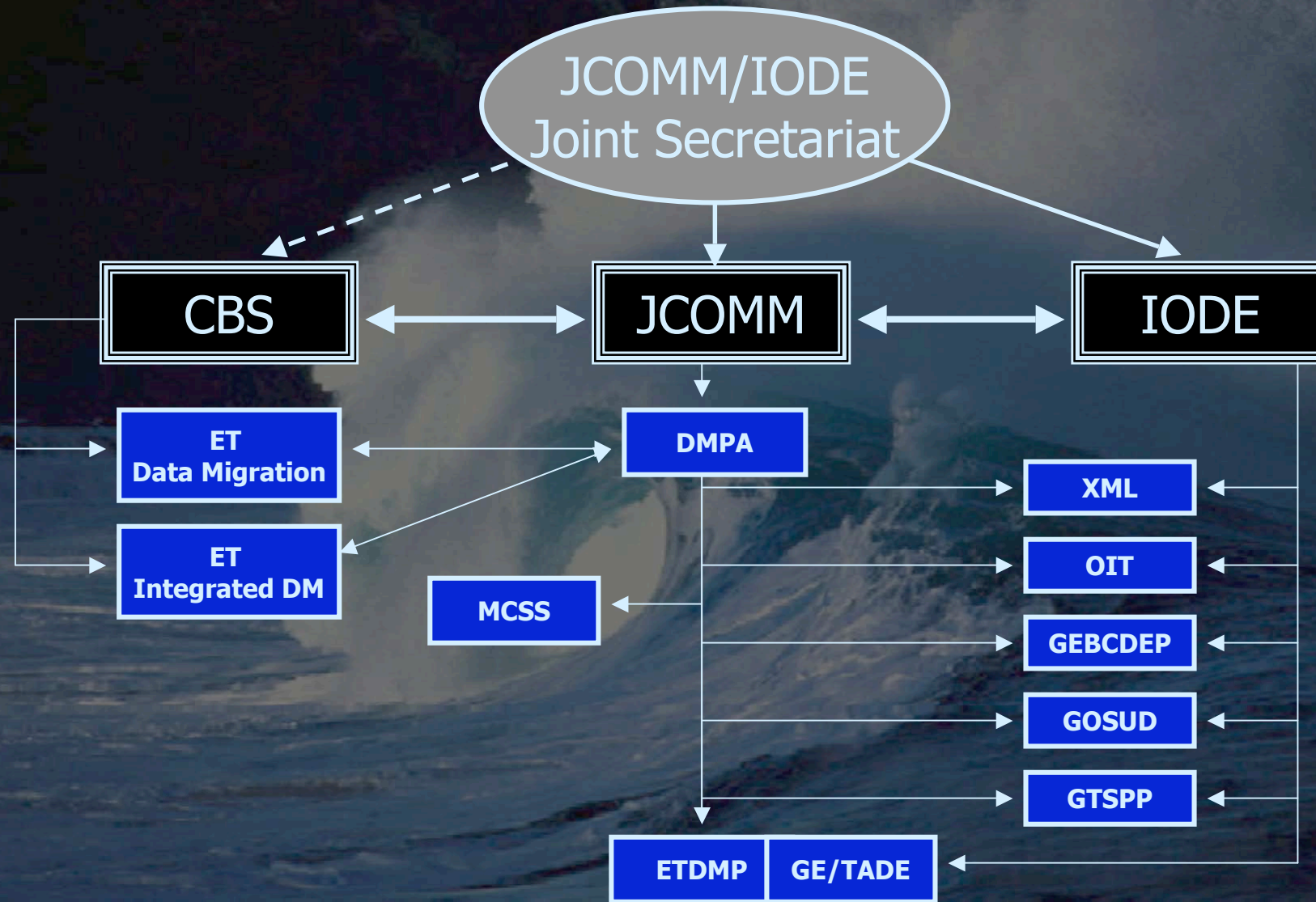


- ❖ IOC Data policy Framework
- ❖ JCOMM-IODE collaboration
- ❖ IOC Data Management strategy
- ❖ COOP DM Implementation Plan
- ❖ JCOMM DM Strategy
- ❖ Future WMO Information Systems
- ❖ DMAC Plan

IOC Data Policy

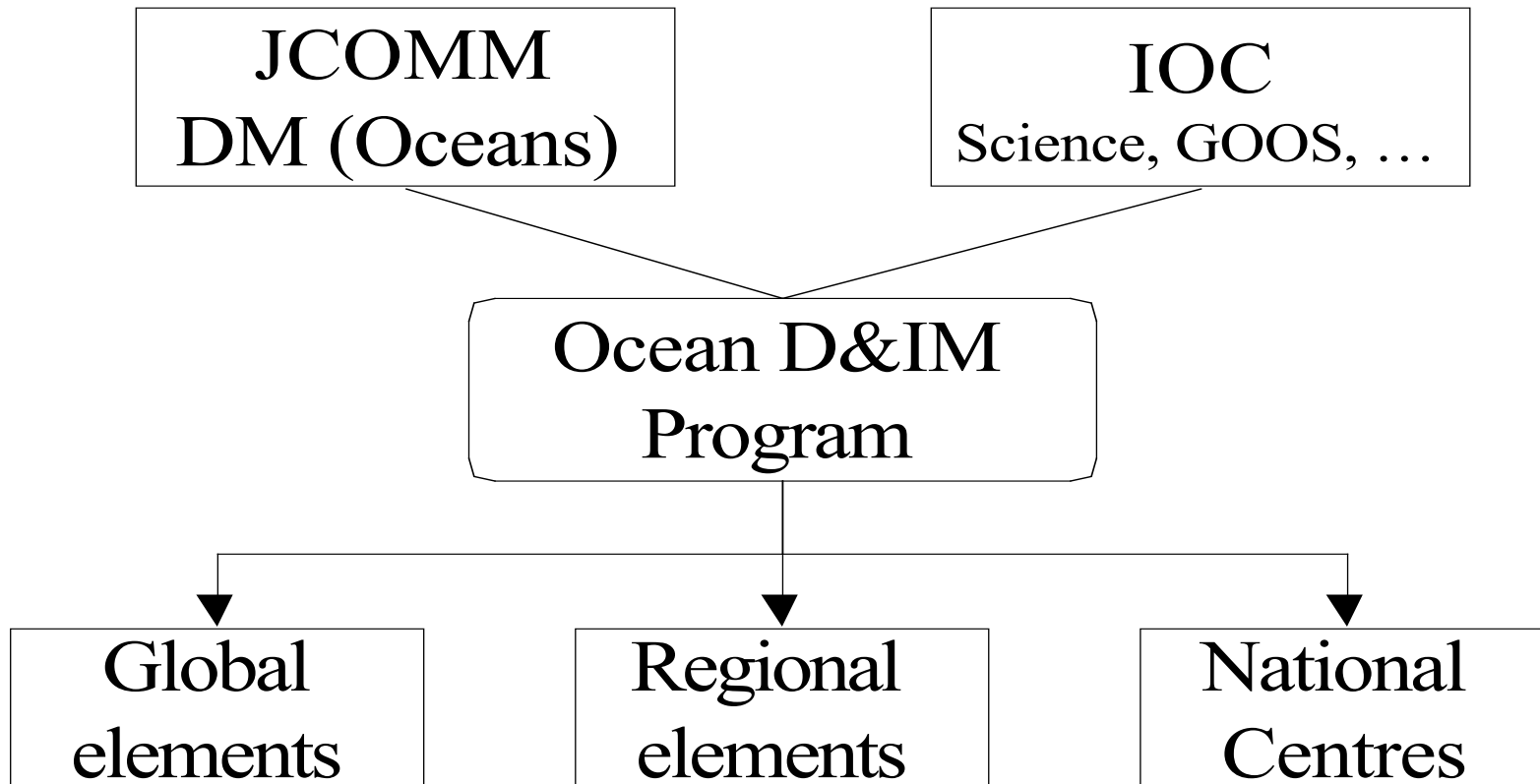
- ❖ IOC Programs: free, timely, open...
- ❖ Non IOC programs: encourage,..
 - ❖ Health and safety
 - ❖ Research
- ❖ IOC/IODE data centres and WDCs
- ❖ Right of Member States
- ❖ Capacity Building

JCOMM-IOEC Collaboration



IOC DM Strategy

Governance



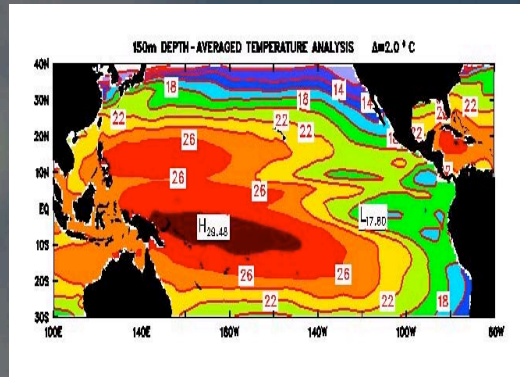
Services



Maritime Safety



Pollution Response



Oceanographic



Sea Ice information



Waves and Surges

Activities of Interest

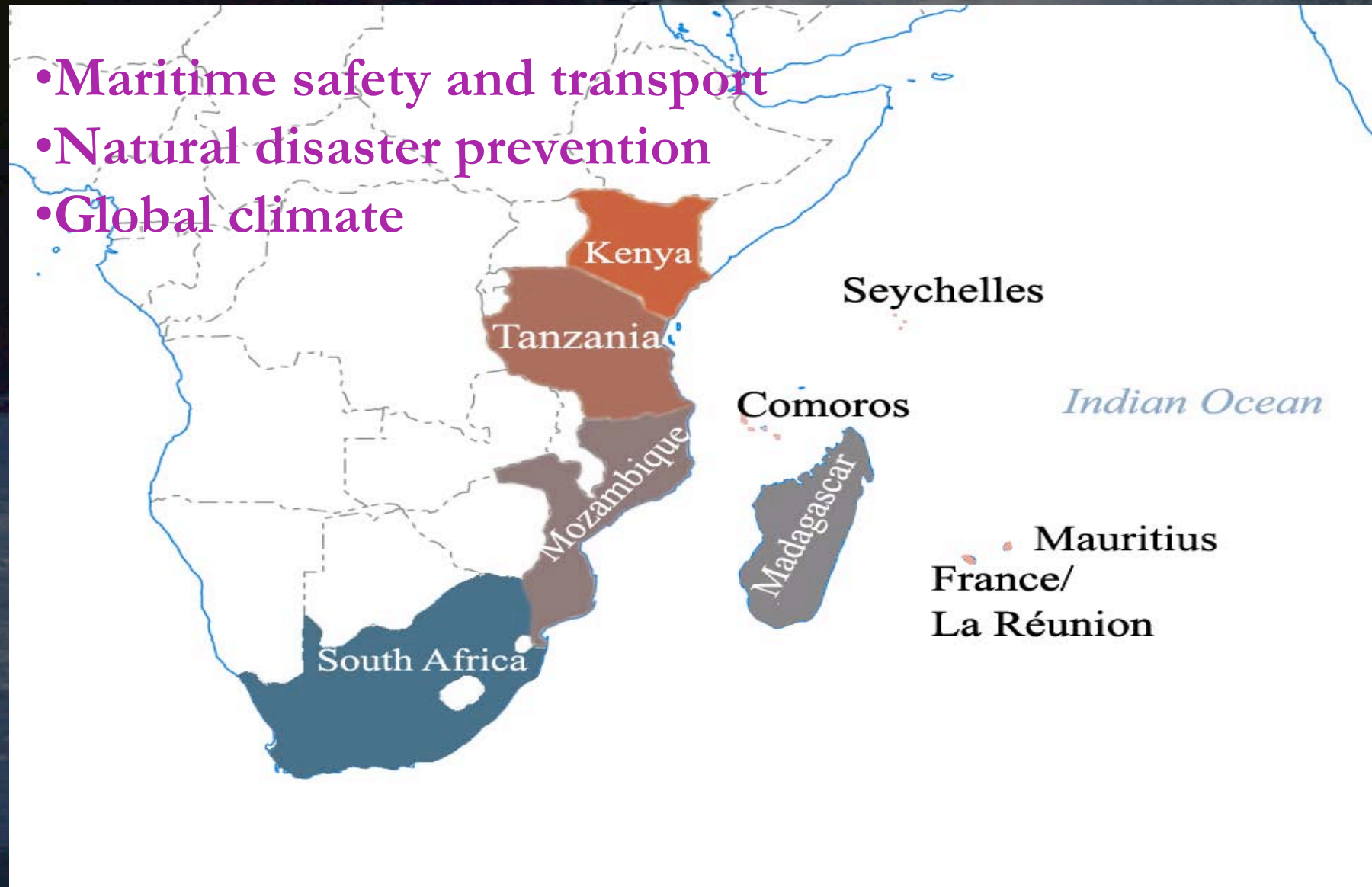
- ❖ New Technical Developments in Sea and Land Level Observing Systems with GLOSS, Oct '03
- ❖ CLIMAR-II & 150th Anniversary, Brussels November 2003
- ❖ Toulouse ocean products and MPERSS workshops May 2004
- ❖ JCOMM-II, Halifax, September 2005 and associated scientific conference

How OOPC may help?

- ❖ **Bridging gap between scientists & data managers, & service providers**
- ❖ **Creating incentives for scientists to submit data to data centres**
- ❖ **Need for peer review of data sets, and for standard practices**
- ❖ **Create integrated data products**
- ❖ **Provide guidance to pilot projects**


WIOMAP

- Maritime safety and transport
- Natural disaster prevention
- Global climate



Project structure

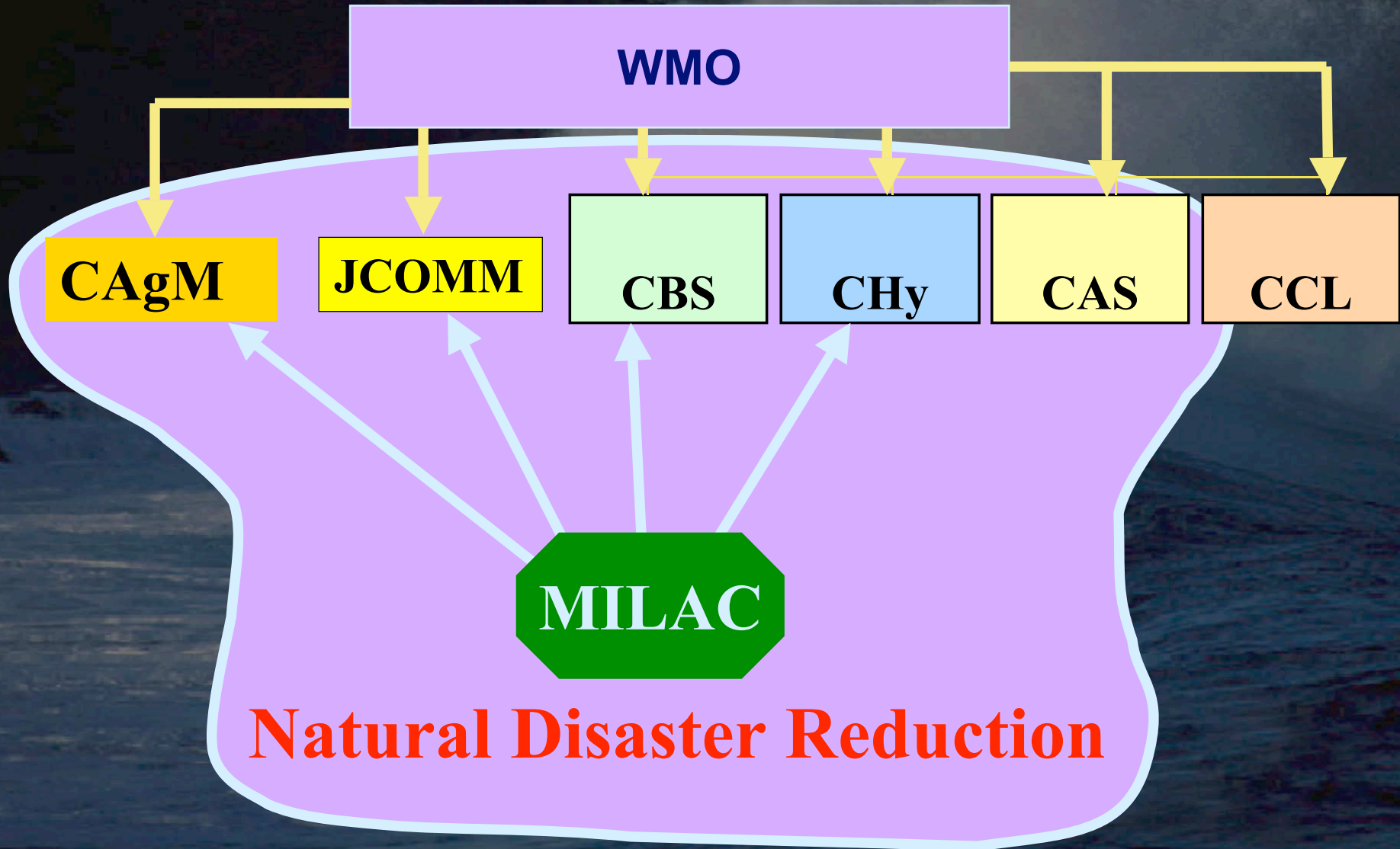
- ❖ Primary focus on marine/ocean services
- ❖ Regional capacity building
- ❖ Observing network & marine communications enhancement
- ❖ Data Management
- ❖ Network of regional marine applications centres
- ❖ Close coordination with existing regional projects and programmes including GOOS Africa and IOGOOS

A photograph showing a flooded landscape. In the foreground, there are several large, dark, spiky plants partially submerged in the water. In the middle ground, four people are wading through the water, each pushing a bicycle. The background shows a line of trees under a hazy sky. The overall scene depicts the impact of flooding on daily life and infrastructure.

Proposal for “Natural Disaster Reduction”

Marine Impacts on Lowland Agriculture and Coastal Resources (MILAC)

MILAC in WMO



Status

- ❖ MILAC is endorsed by WMO Congress 2003.
- ❖ Liaising with Regional GOOS bodies.
- ❖ Potential support from the WMO's ISDR.

JCOMM Team



Thank you!