














The Observing System in the Atlantic Sector

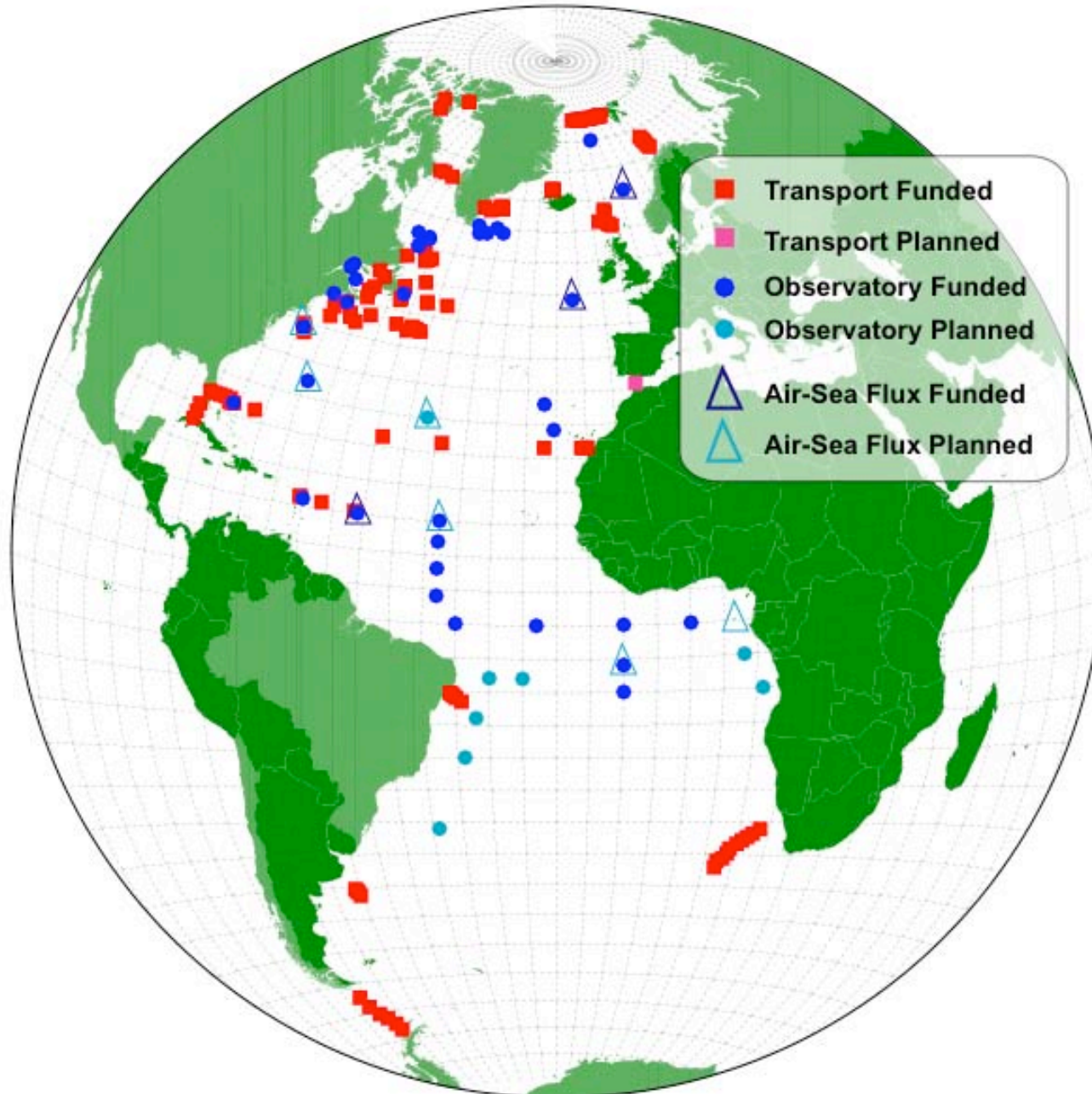
ATLANTIC OBSERVATIONS PRESENT NETWORK AND FUTURE PLANS

-  PIRATA
-  GUAN
-  GSN
-  SEA LEVEL
-  FLOATS
-  DRIFTERS
-  AIR-SEA FLUX
-  FIXED POINT TIME-SERIES
-  XBT
-  Repeat Hydrography
PLANNED/FUNDED
-  Repeat Hydrography
PLANNED/FORWARD LOOK



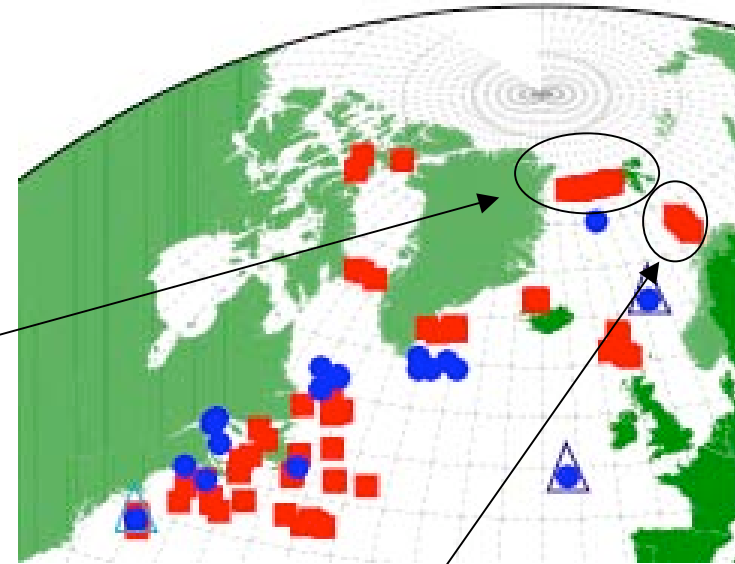
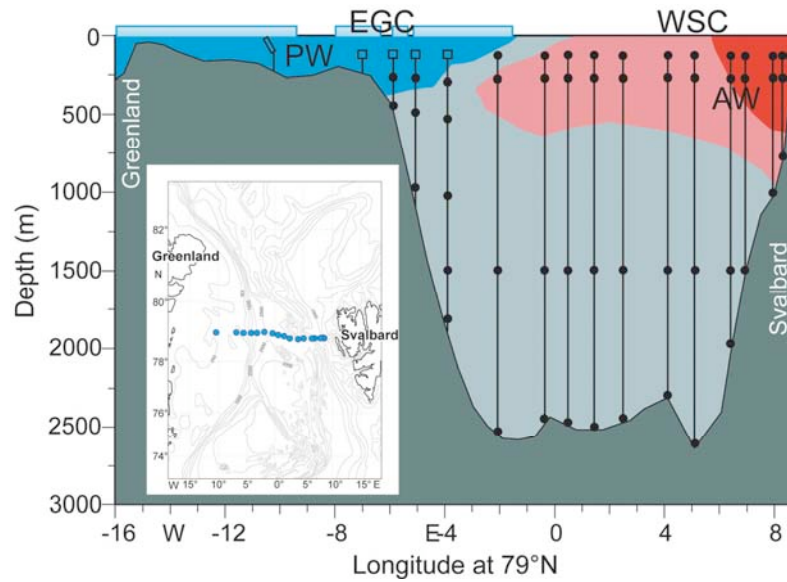


Fixed Point Time Series

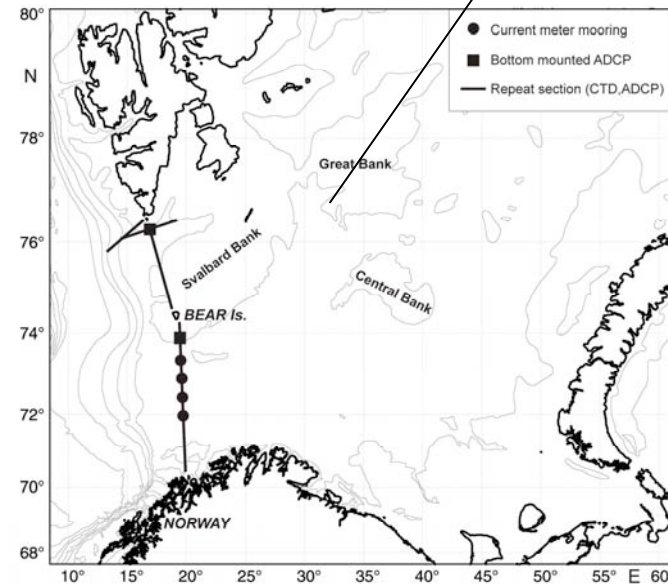




Fram Strait - ASOF(EC)N 1996-2006 E. Fahrbach, S. Osterhus



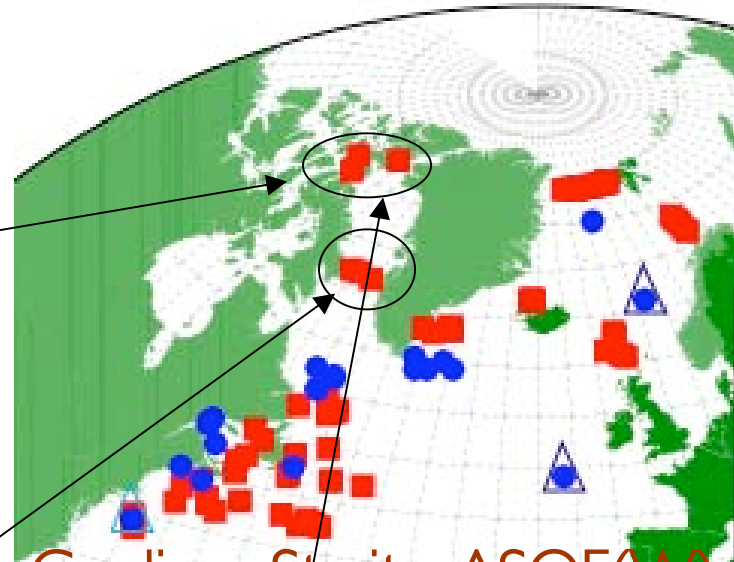
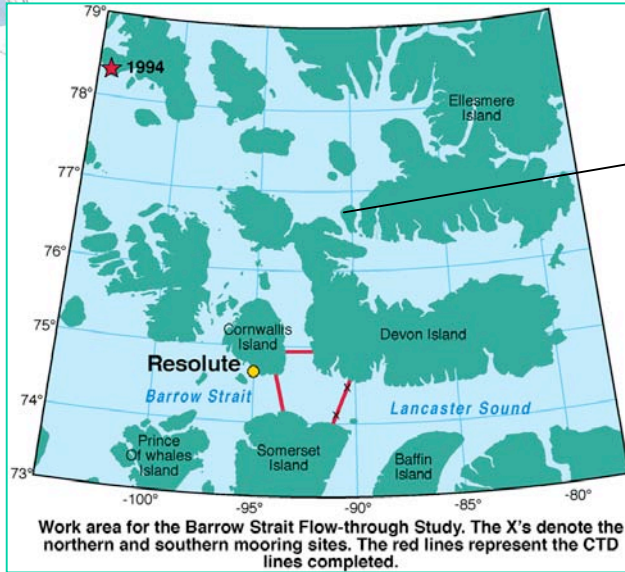
Barent Slope - ASOF(EC)N 1996-2006 H. Loeng





Barrow Strait - ASOF(W)

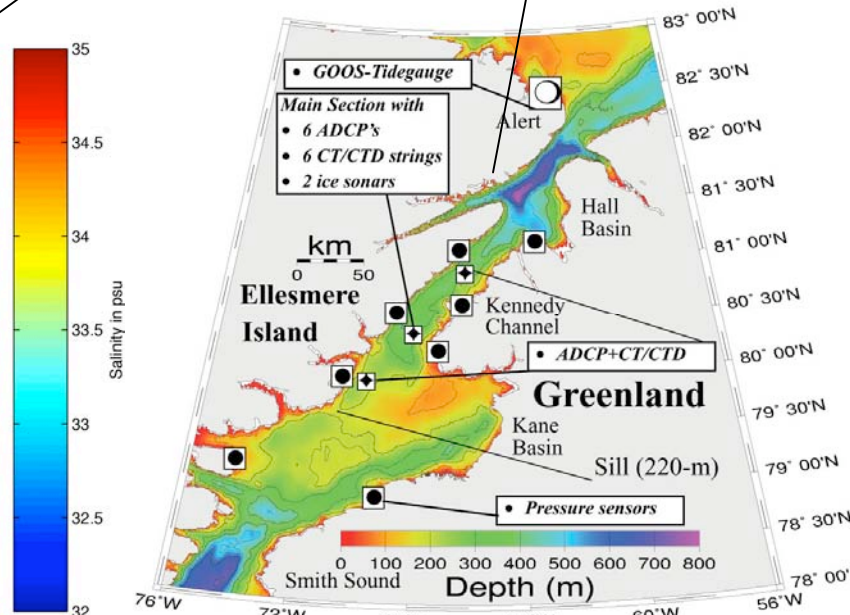
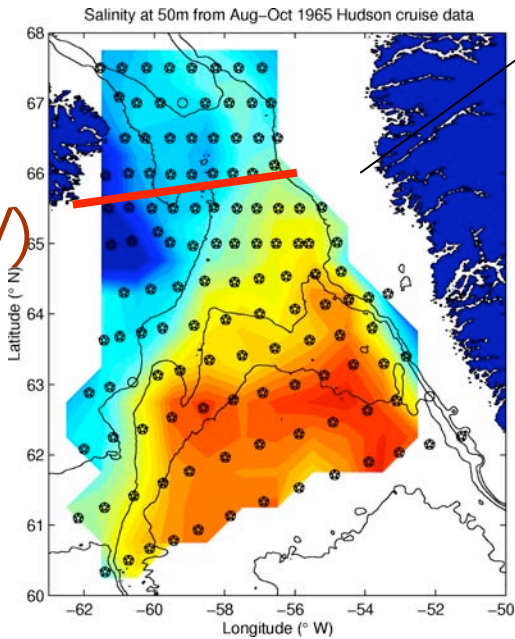
1998-2005 S. Prinsenber, P. Rhines



Nares and Cardigan Strait - ASOF(W)

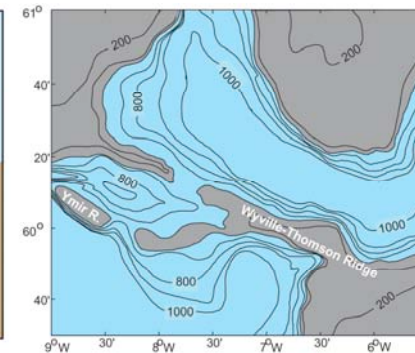
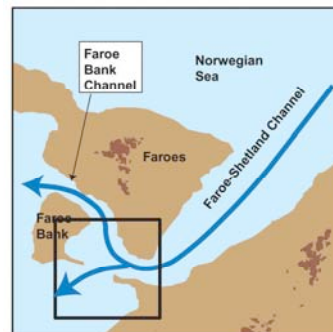
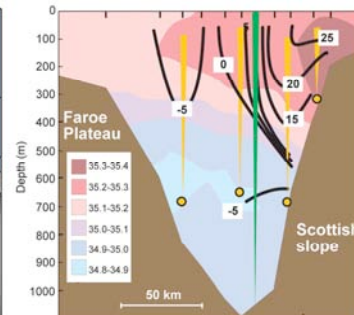
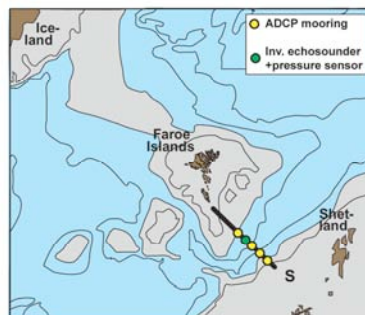
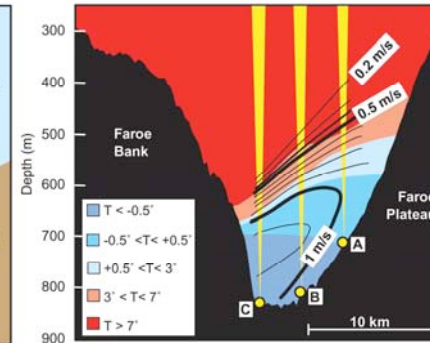
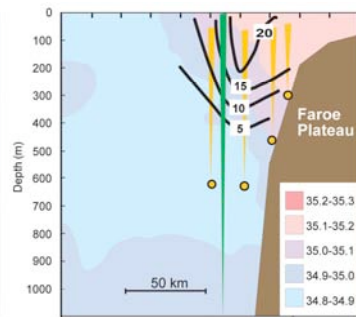
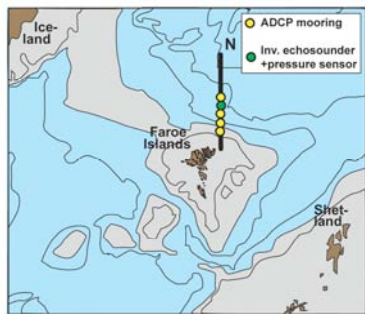
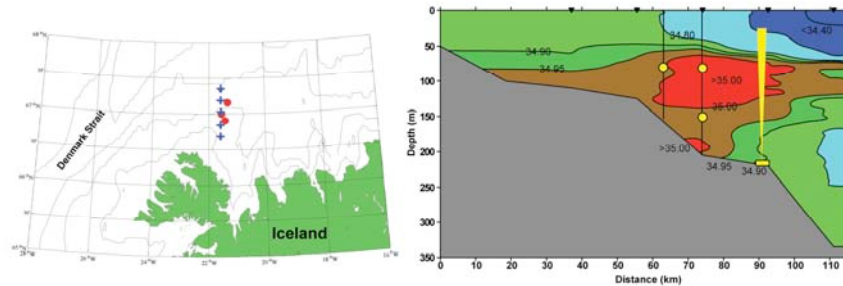
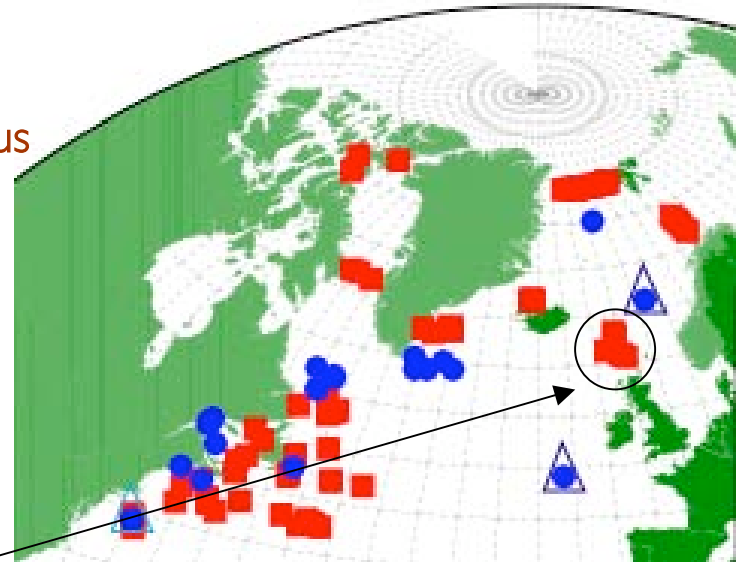
1998-2006 K. Falkner

Davis Strait - ASOF(W)
2003-2005
C. Lee



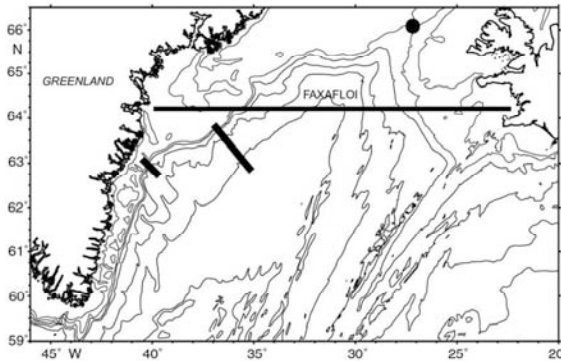


Exchanges with Nordic Seas - ASOF(EC)E 1997/8-2005 S. Osterhus

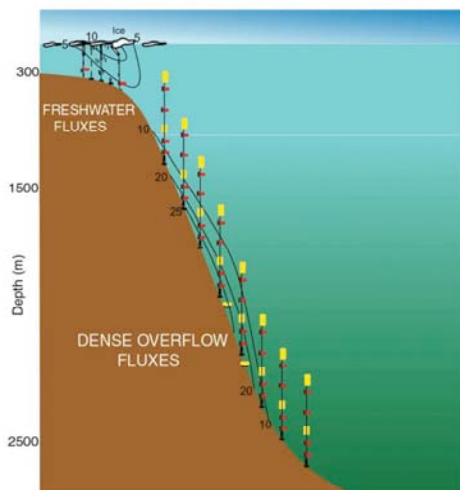




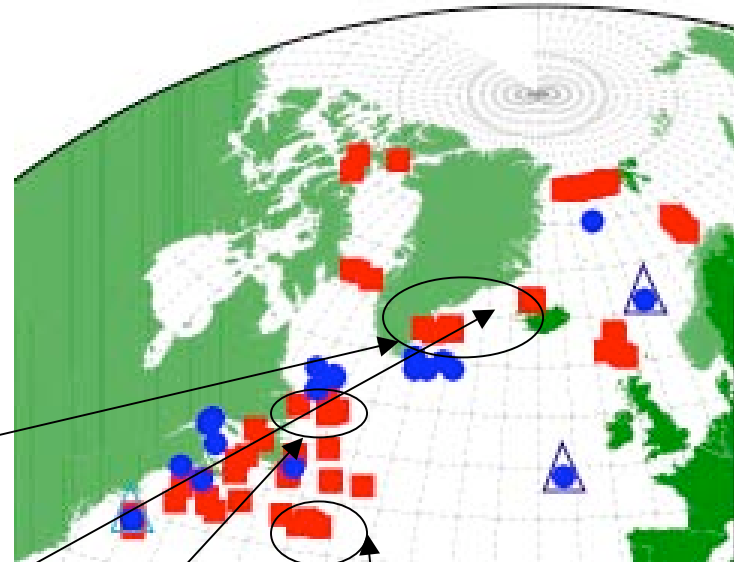
SE Greenland Freshwater Fluxes ASOF(EC)W 1997-2006 B. Dickson



Measurement area of ASOF - W



Principal arrangement of shelf and slope arrays to measure freshwater and dense overflow fluxes



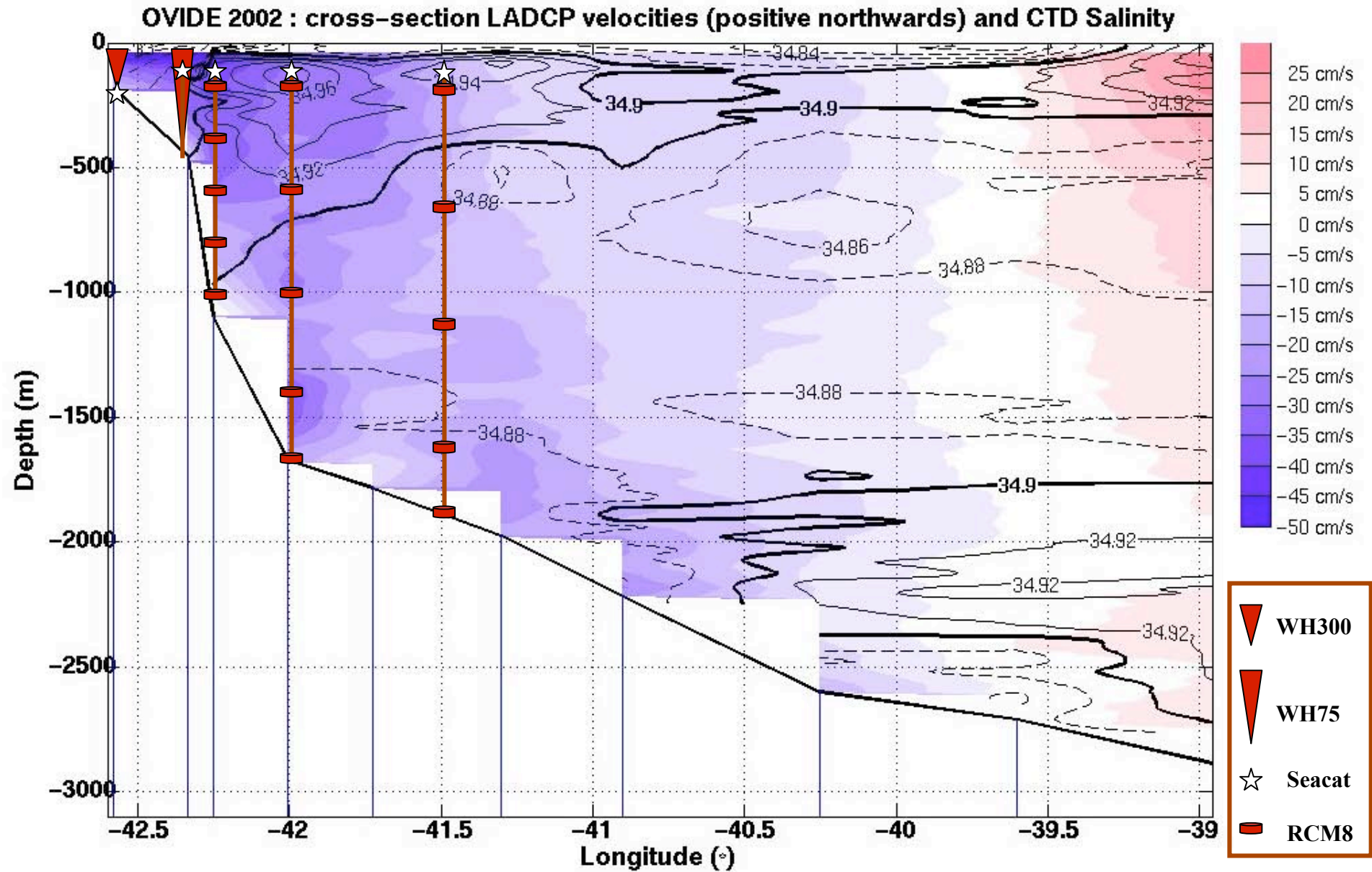
Denmark Overflow ASOF(EC)W
1997-2006 J. Jonsson

Labrador Sea Export
1997-2006 F. Schott

NADW Export
1999-2003 F. Schott



60°N Planned as part of Ovide. H. Mercier





Atlantic Zone Monitoring Programme

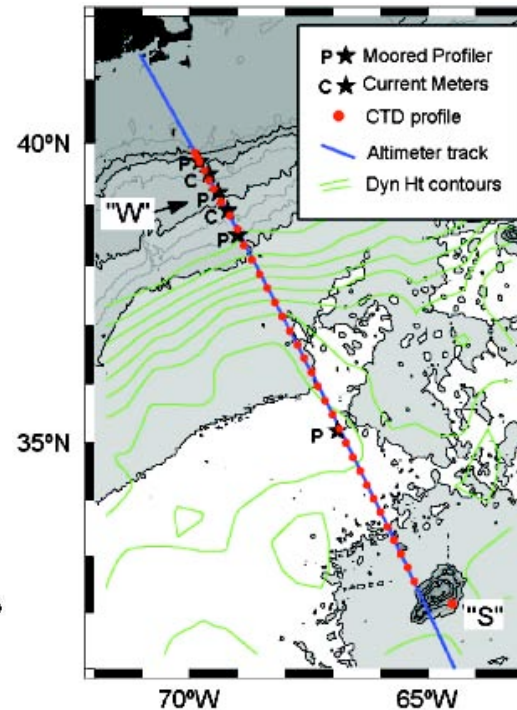
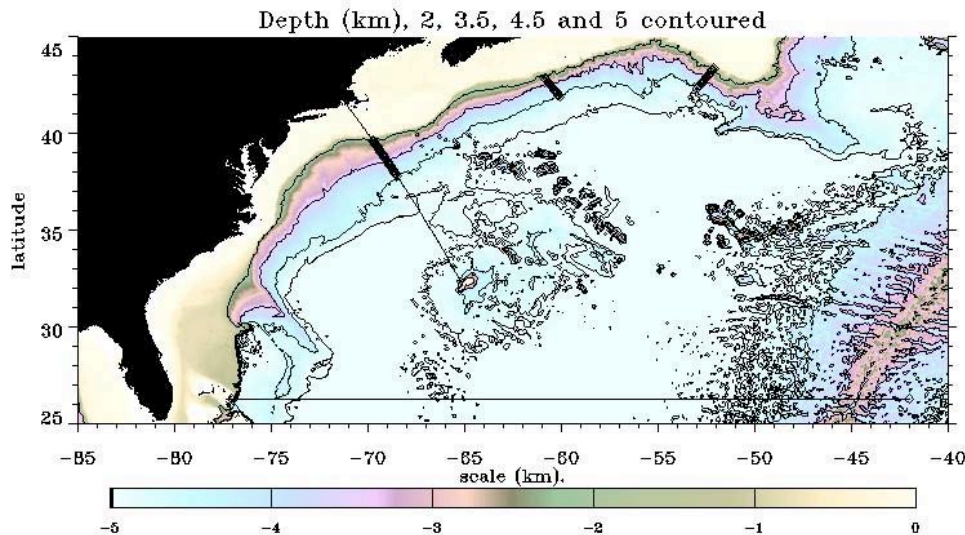
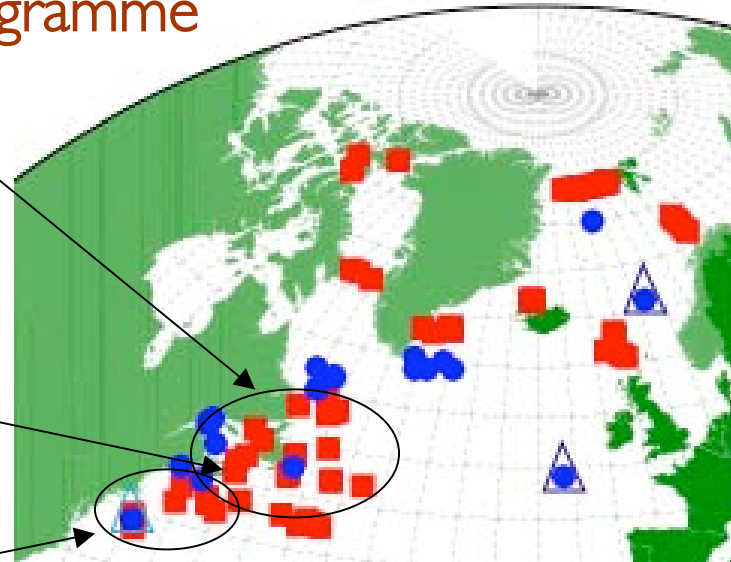
1999-operational J. Theriault, A. Clarke

Halifax Flemish Cap Lines

2000/1-2004 J. Loder

UK RAPID

2004-2008 D. Marshall, C. Hughes



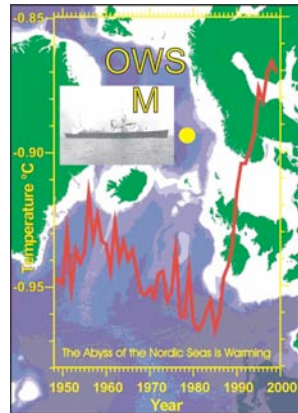
NW
Transport
Planned
Funded J.
Toole





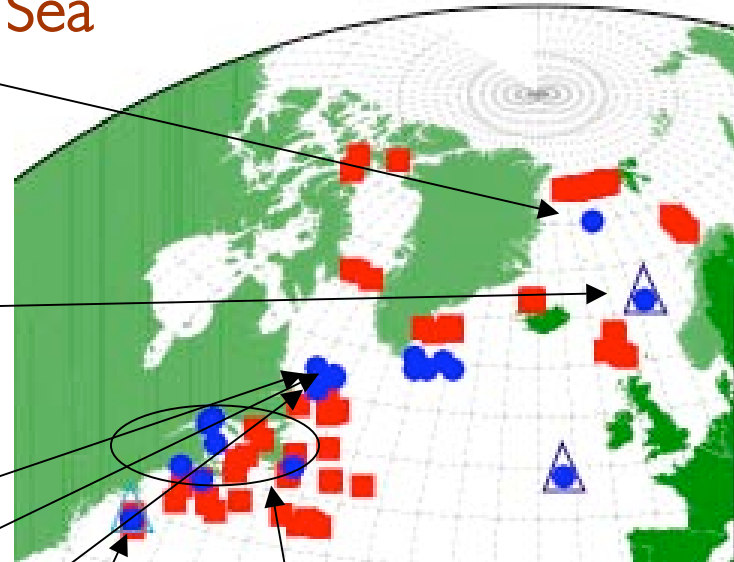
Deep Ventilation in Greeland Sea

1999-2004 E. Fahrbach



OWS M - NoClim

1948-2004 S. Osterhus



Labrador Sea Deep Convection

1996-200? U. Send

OWS Bravo

1960-2003 A. Clarke

Labrador Slope Current

1977-2003 A. Clarke

Atlantic Zone Monitoring Programme

1999-operational J. Therriault, A. Clarke

Station W

2001-2003 J. Toole





Irminger Sea time series

Ongoing 2001-???? B. Pickart
LOCO Funded Dutch programme
2003-2008 H. van Aken

Hydrostation S Bermuda

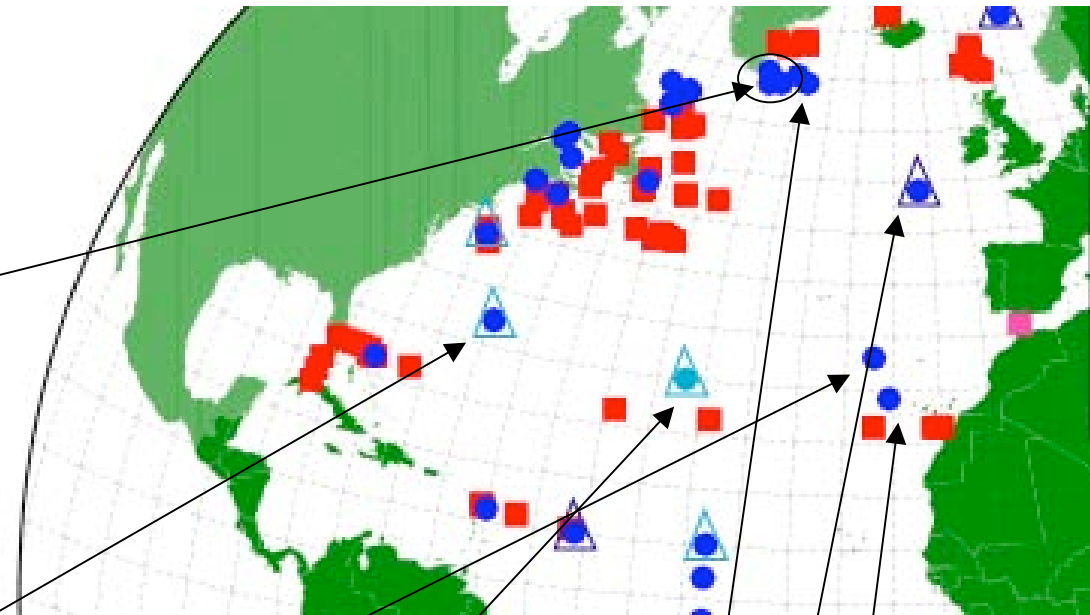
1954 - ?????

Madera Abyss K276

1980-???? T. Mueller

DEOS time series

Planned, J. Orcutt



ANIMATE:

CIS: 2001-???

PAP: 2001-???

ESTOC: 1994-????

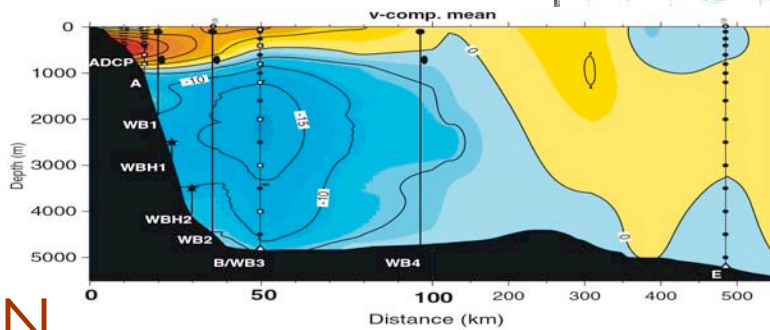
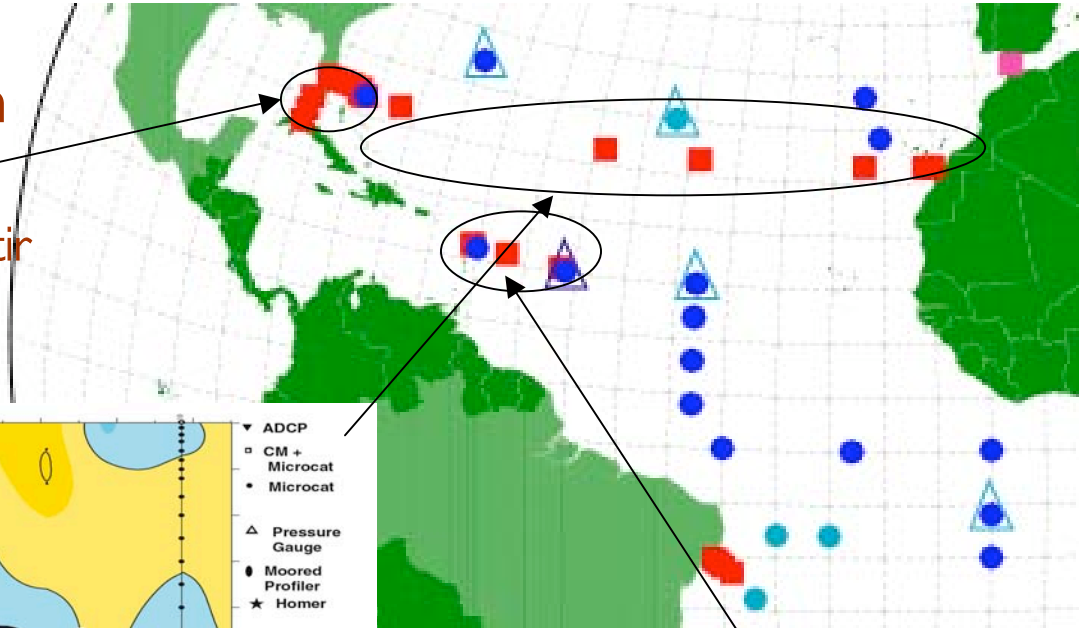
U. Send





Florida Transport from Cable measurements

1982 operational, A. Flosadottir



MOVE

2000-2005 U. Send

MOC
at 26.5°N
Planned
Funded
2004-2008
J. Marotze

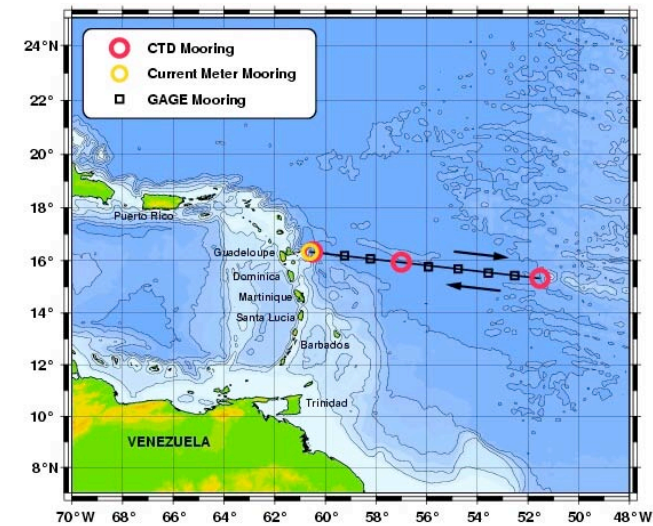
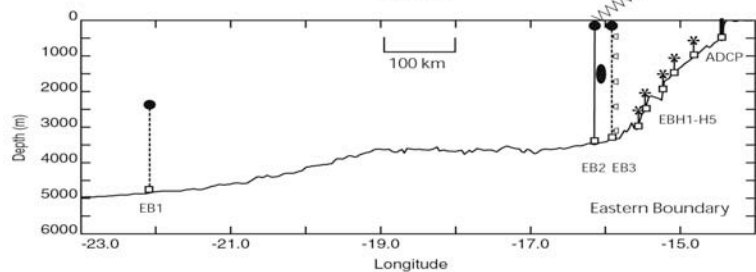
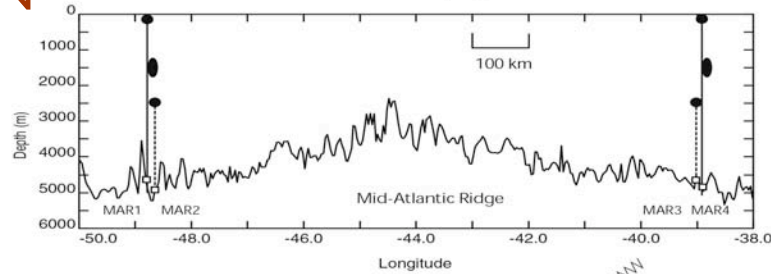


Figure 1: Mooring array for monitoring the Atlantic meridional overturning circulation at 26.5 N. a) Western boundary; b) Mid-Atlantic Ridge; c) Eastern boundary



ABACO time series
 1986-funded to continue ????
 W. Johns

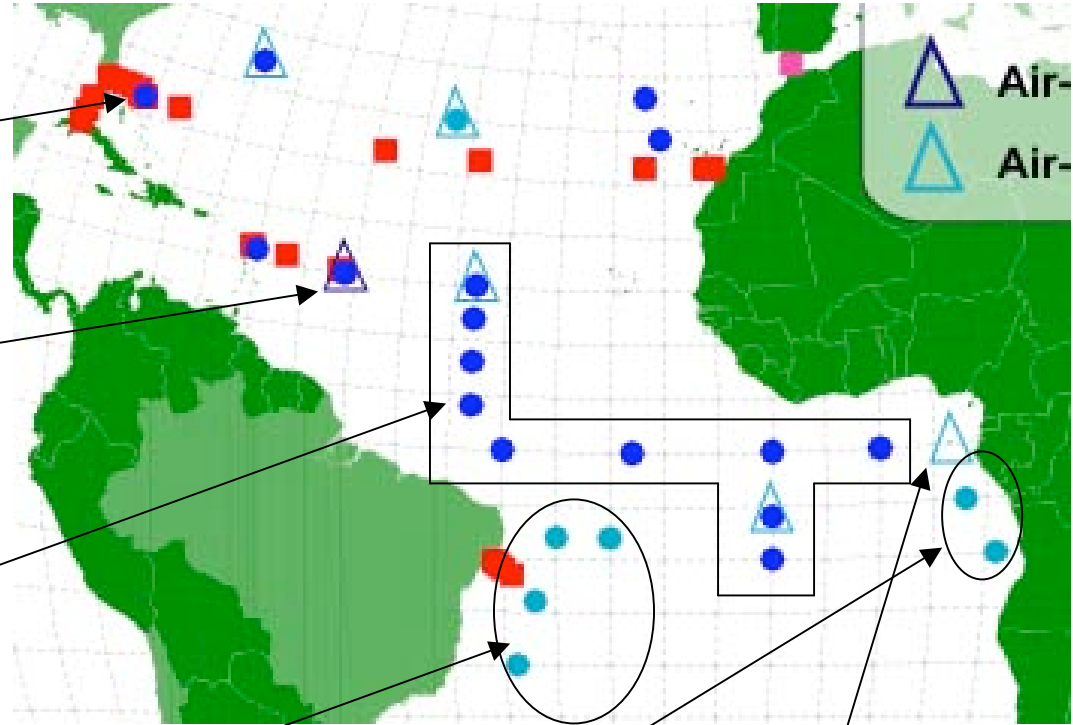
NTAS
 2001-2007 A. Plueddemann

PIRATA
 1997-2005

SW PIRATA Extension
 Proposed, P. Nobre

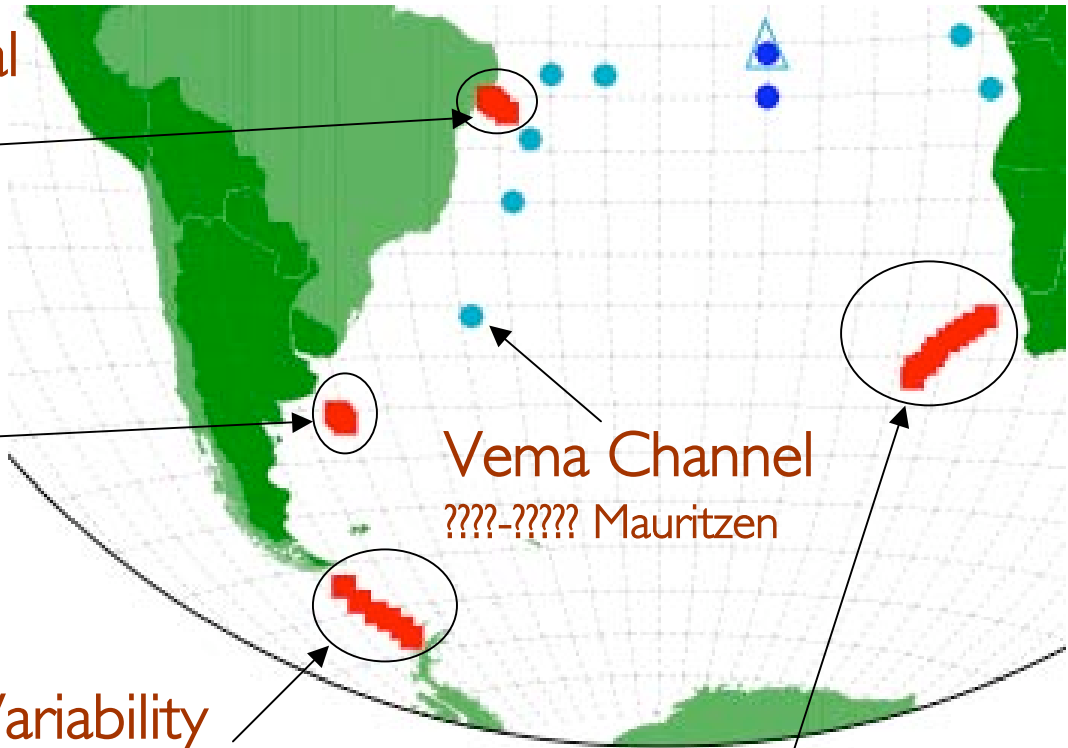
SE PIRATA Extension
 Proposed, M. Rouault

S. Tome air-sea Ref.
 Proposed EGEE, B. Bourles

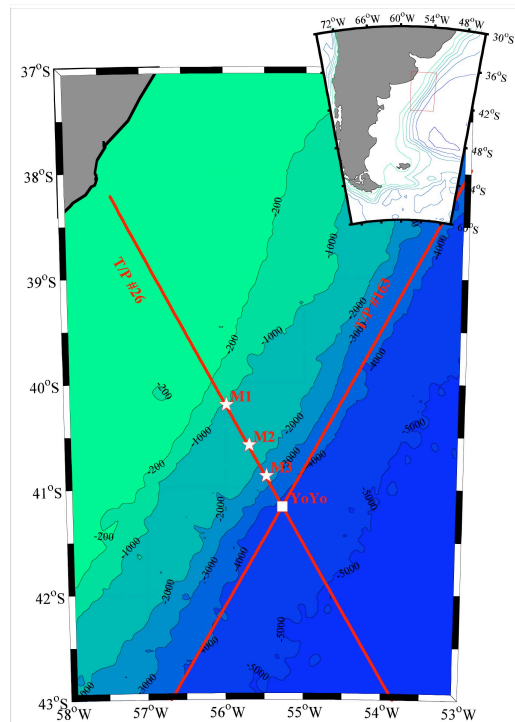




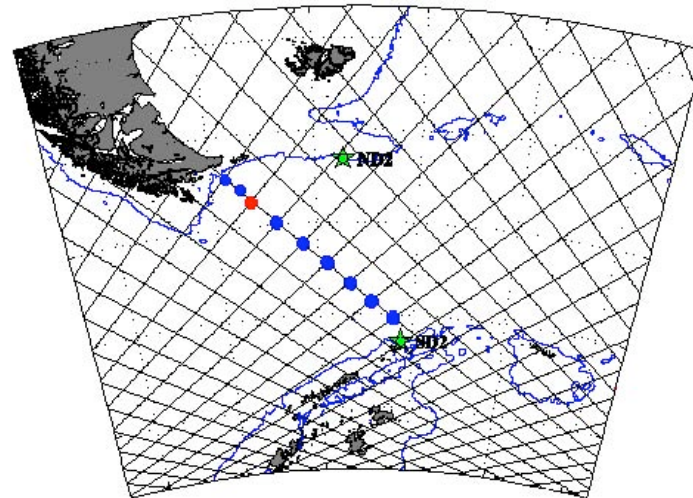
Tropical-Subtropical Interaction
2000-2005 F. Schott



Malvinas Current Transport
2002-200? C. Provost



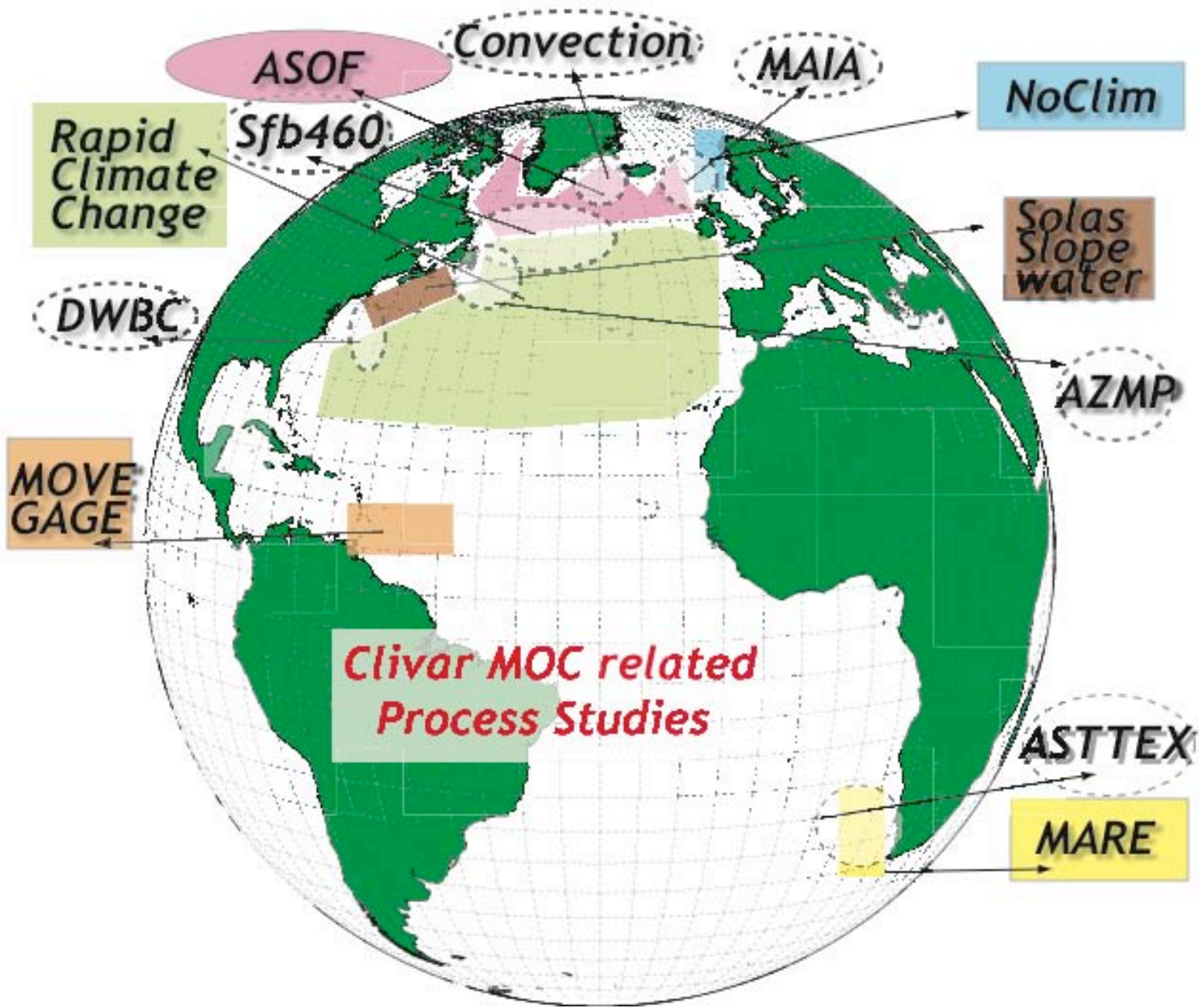
ACC Variability
2004-2006 C. Provost

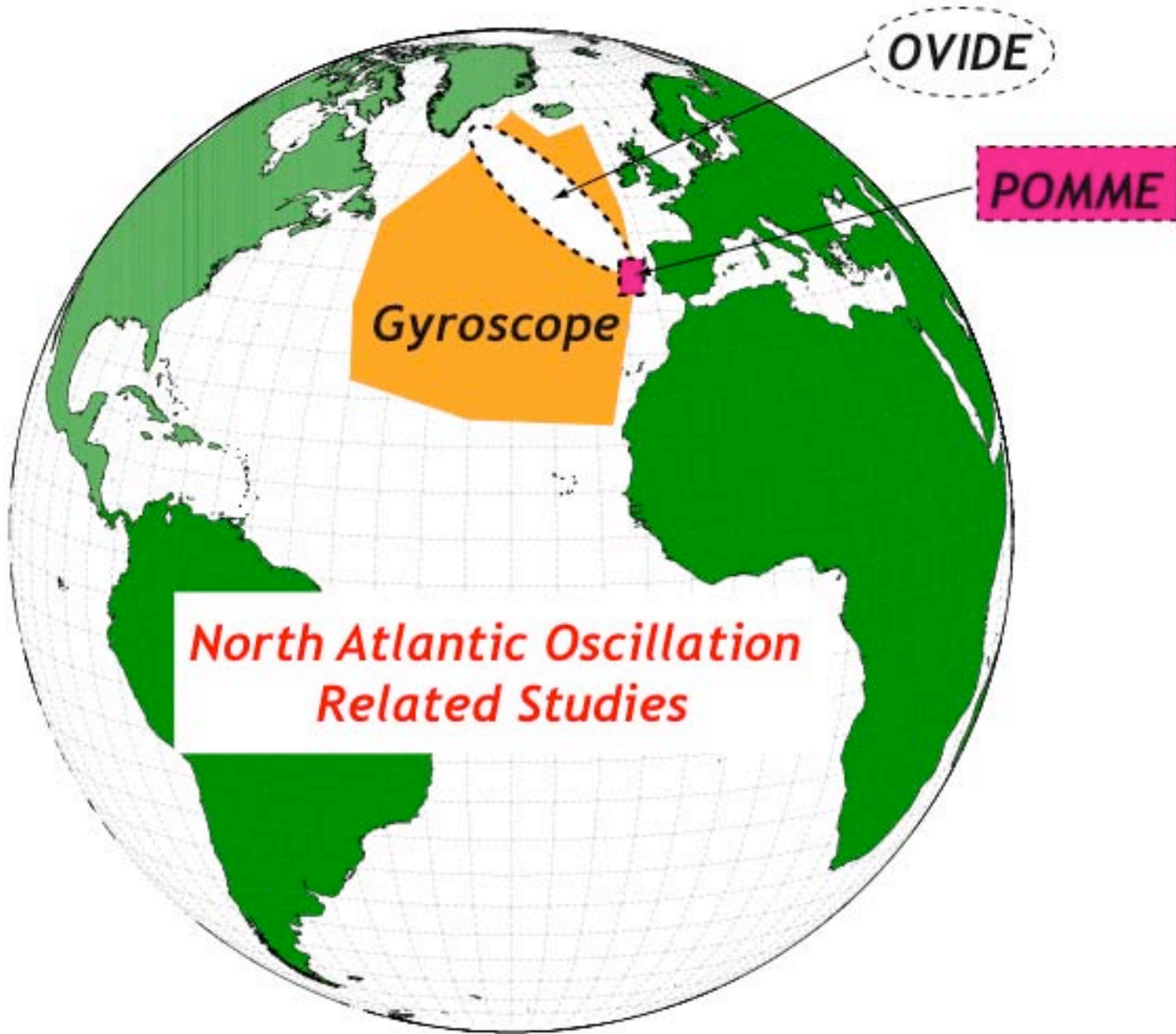


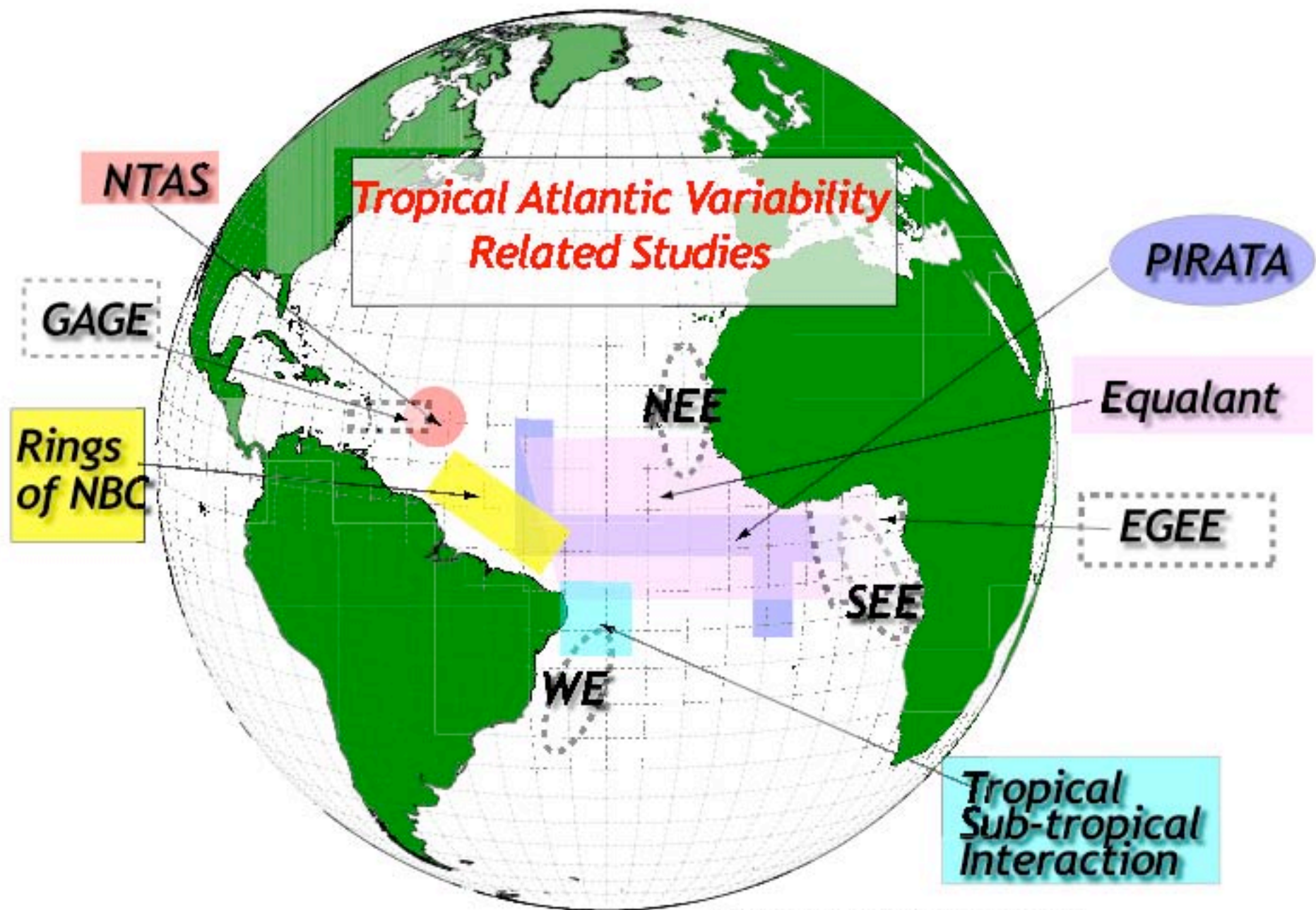
Vema Channel
????-????? Mauritzen

ASTTEX
2003-2005 D. Byrne









(Compiled by R. Boscolo, 24/05/02)