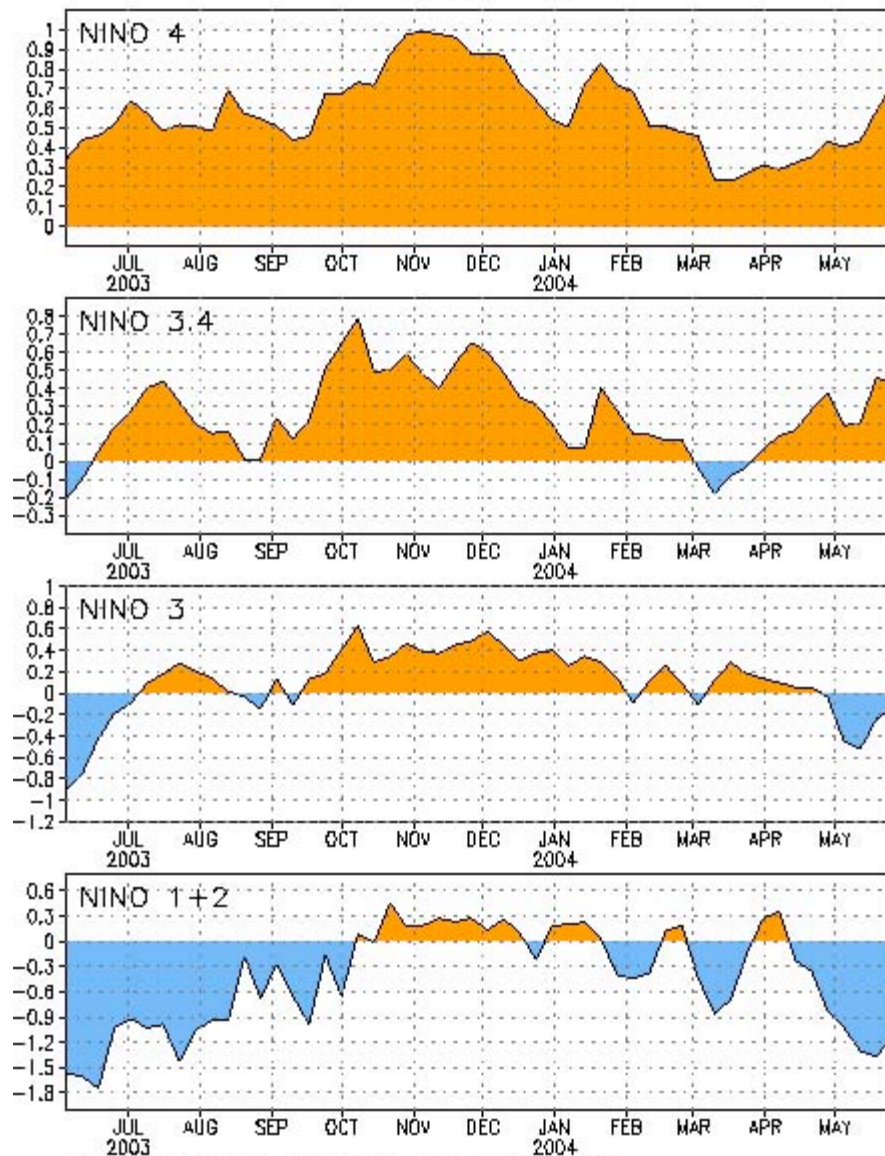


ENSO Update

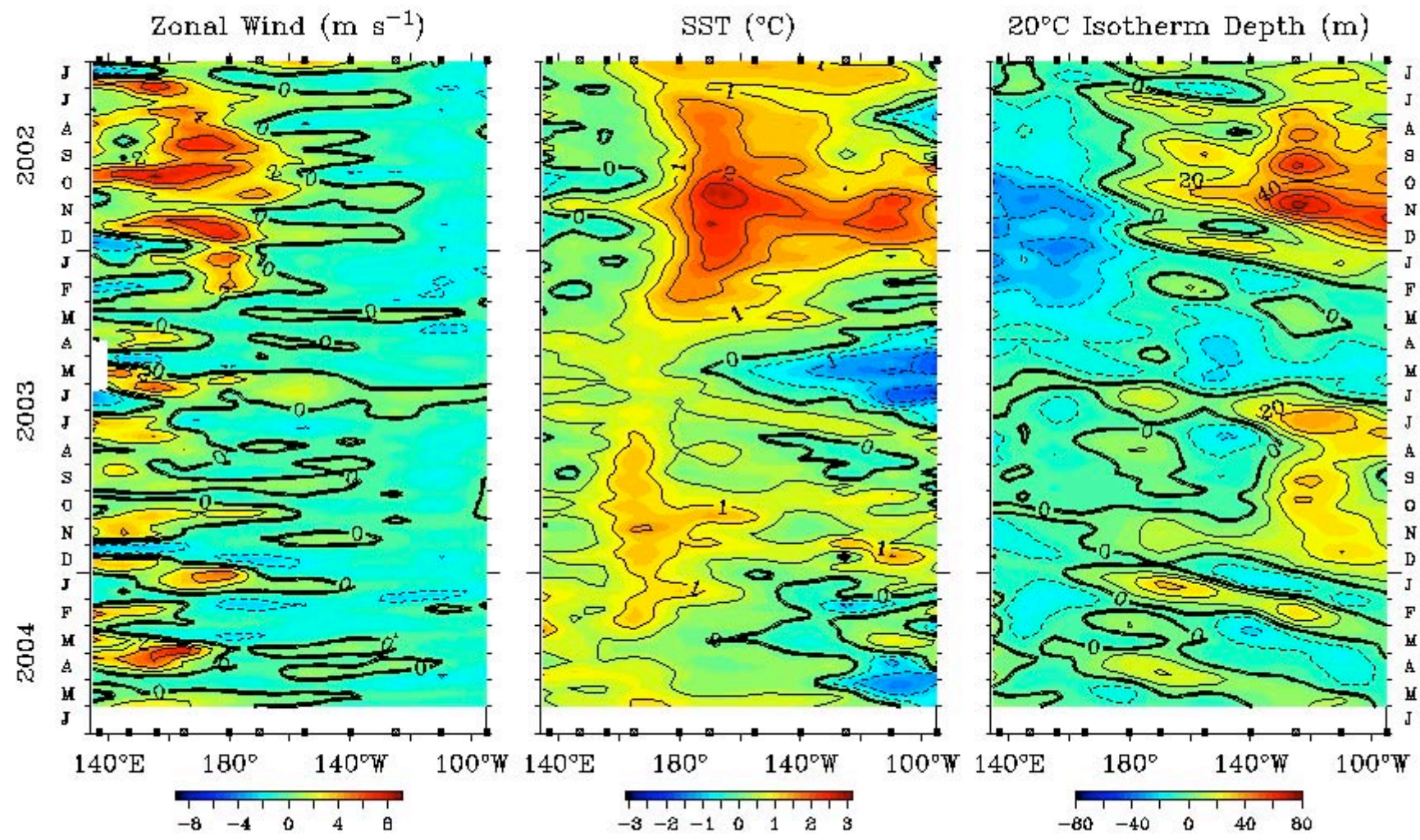
- Was very close to El Nino, using new NOAA definition because of Oct-Dec'03 Nino3.4 SST index
- Not very close using conventional definitions
- Dateline anomaly stayed positive, but little cold tongue anomaly
- Westerly wind events present, but not abnormally so
- Is anything starting as we meet? Forecasts don't agree; IRI assigns EN probability of <0.5 and very low LN probability

SST Anomalies

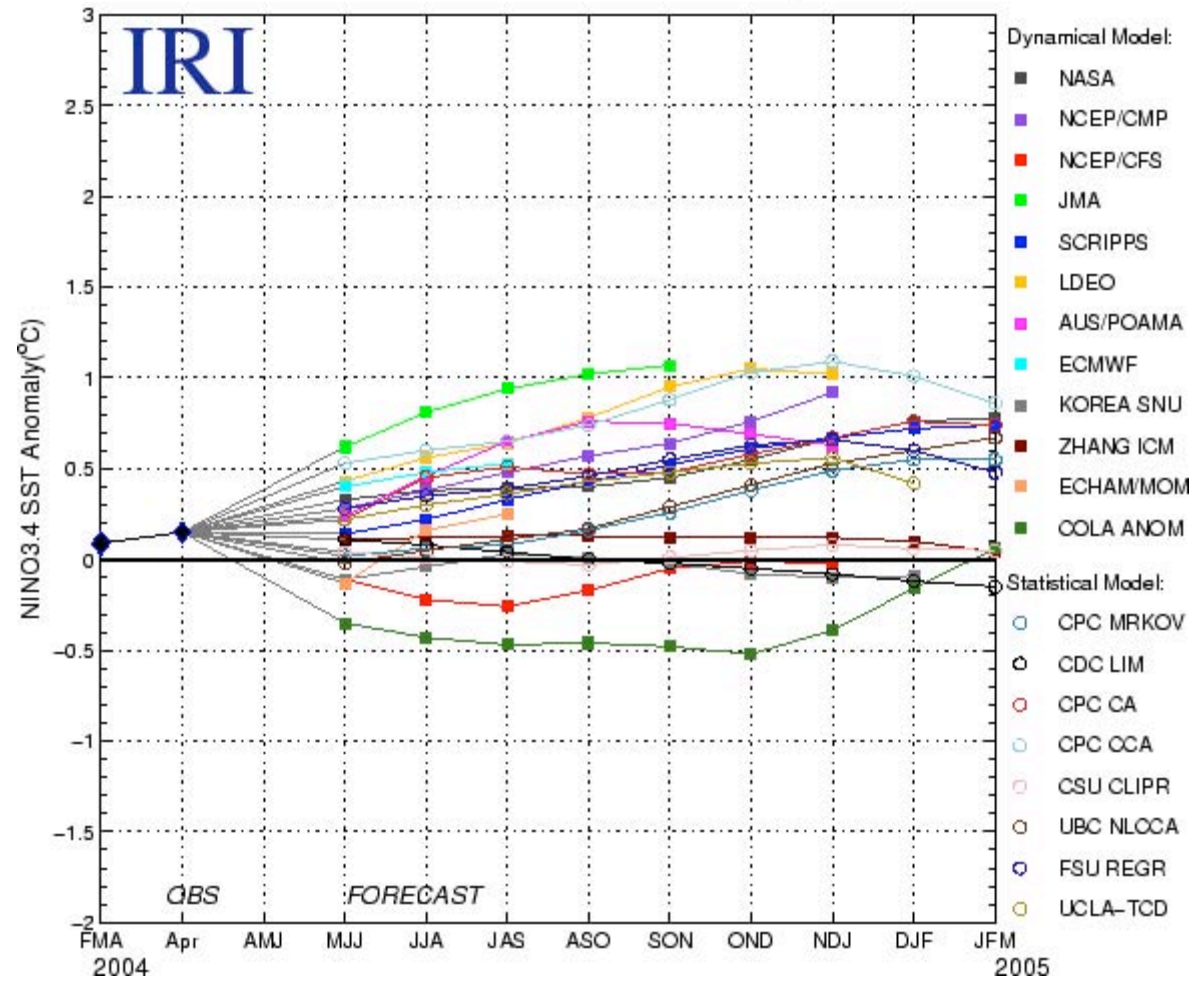


Data updated through 26 MAY 2004

Five Day Zonal Wind, SST, and 20°C Isotherm Depth Anomalies 2°S to 2°N Average



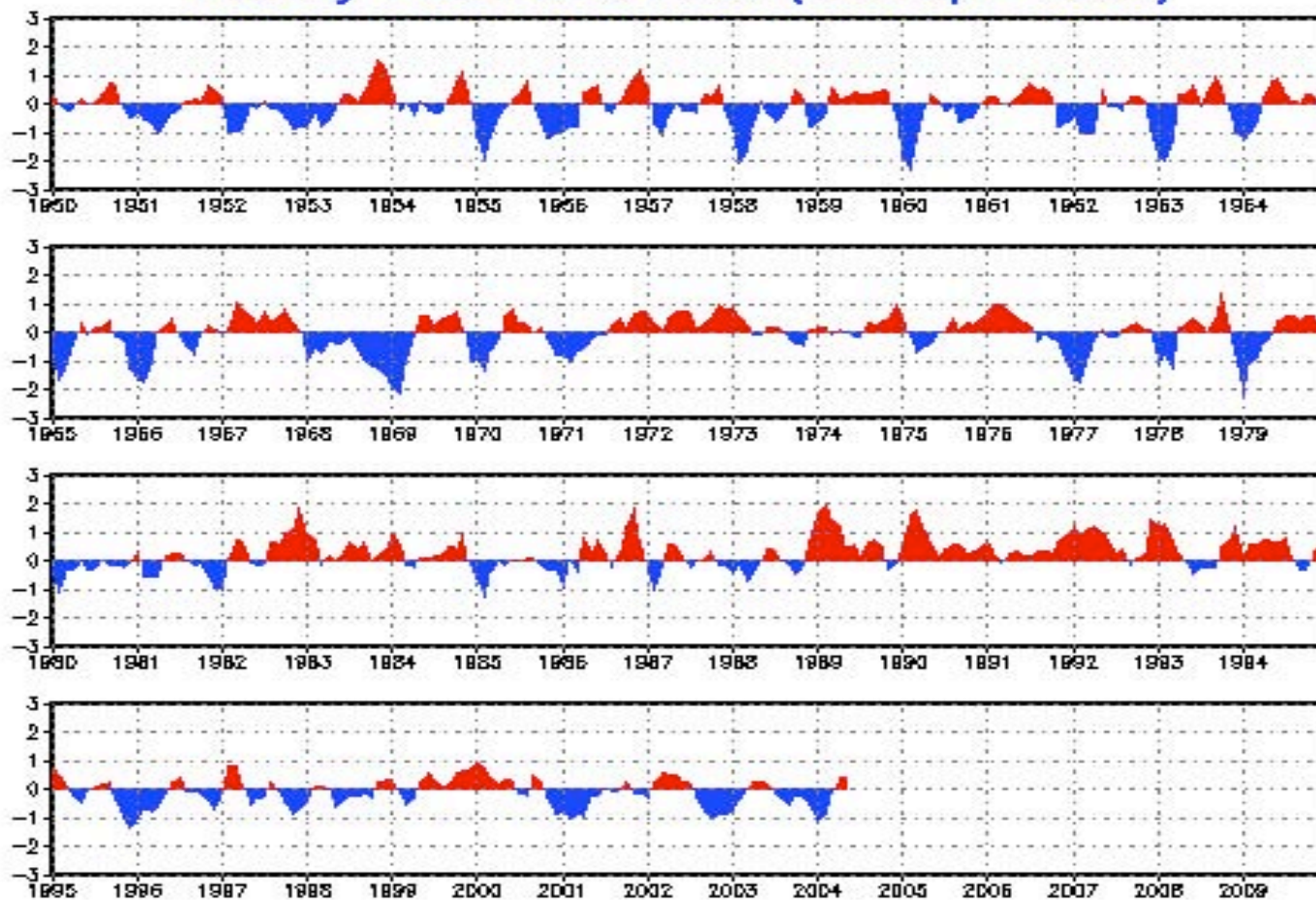
Model Forecasts of ENSO from May 2004



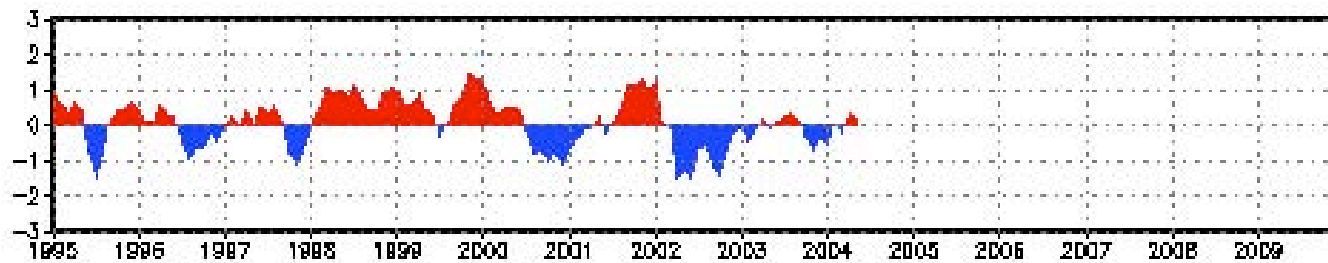
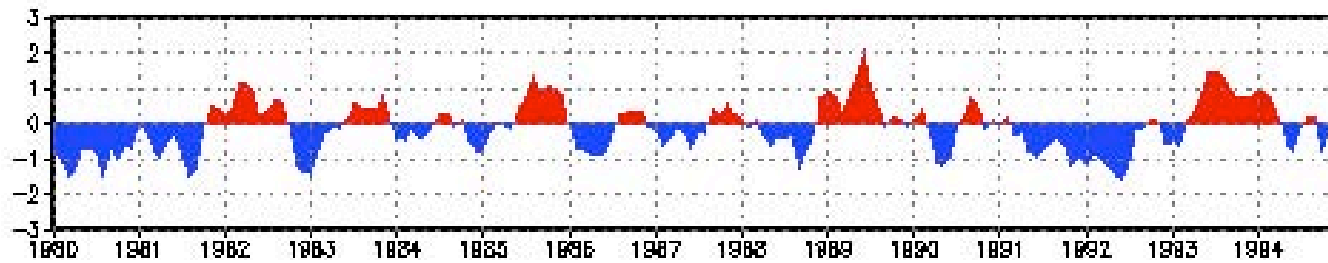
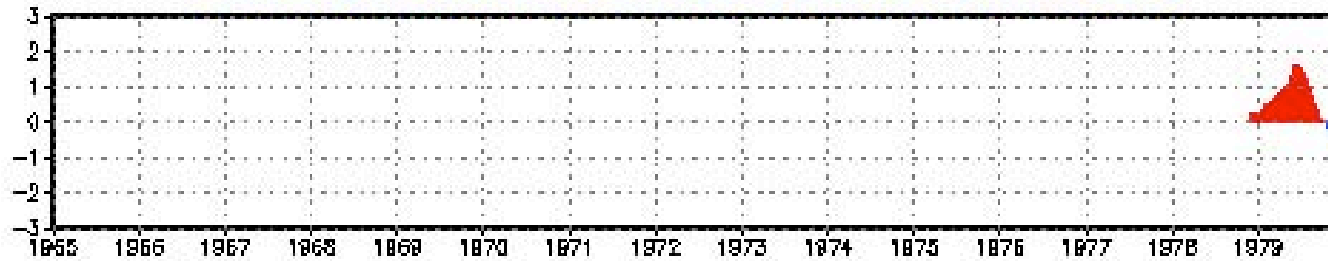
Other Surface Ocean Climate Indices, 2003-04

- NAO
- AO
- AAO
- PDO

Monthly mean NAO index (until April 2004)



Monthly mean AAO index (until April 2004)



Monthly mean AO index (until April 2004)

